



Cumnor House
School

Back to School

Guidance for a safe return in March 2021





Cumnor House
School



MESSAGE FROM THE HEAD

I am delighted, as no doubt are you, that we appear to be on the road through the pandemic that has disrupted all of our lives.

The worst effect in my opinion, behind the grief and suffering caused by this dreadful disease, is the challenge it has presented to our young people around the world. I do however hold on to the belief that this challenge will have engendered resilience, agency, and a newfound appreciation and understanding for the social aspects of a preparatory education.

It has challenged us, as adults, too. I have no doubt that you are fighting your own battles in your professional and personal life, and I must commend you for all that you have achieved managing that and the demands that having children at home learning on-line, full-time, brings.

For my own team this has, without question, been the very toughest of years. It has also been, however, the year of most professional growth. The skills that the Cumnor team have learnt, the dedication they have shown, and the flexibility they have demonstrated simply blow me away every day.

A lot of the measures that accompany a return to school you will now be familiar with, but there's a reminder in this pack. There are also a couple of new additions to the protocol around rapid testing of staff.

Please take the time to read this document to reacquaint yourselves with routines, although this is still not what any of us want school to look like these adaptations are not from choice but from necessity. It is imperative that we keep our staff, pupils and families as safe as possible. I am delighted that the vaccination programme is going so well but we cannot let this "light at the end of the tunnel" to allow us to be in the least bit complacent.

I look forward to welcoming you back to school next week and thank you again for you continued support and goodwill.

We cannot wait to see your children back in school 'in real life'.

Stay well

Mrs Amanda McShane
Headmistress of Girls' School

WELCOME BACK

Our risk mitigation routines are already well established in school and so welcoming more children back through the school gates safely will draw on this prior experience. The school didn't close during this most recent lockdown, remaining open for Key Worker and Vulnerable children.

As a result, our Cumnor House girls will be placed in consistent groups - the 'bubble' concept - which will be kept apart wherever it is prudent to do so. This will involve classes, lunchtimes and play, whilst extra-curricular activities will involve consistent groups of pupils in line with the latest government guidance.

We will once again be slightly staggering the start and finish times for the school day across our different 'bubble' groups. These reflect the smaller-than-standard size of our independent school and regulates the numbers of girls entering and exiting the school at the same time. In doing so, we have set about to maximise our school day whilst minimising disruption to our families. Regrettably, we cannot welcome parents into the school buildings at this time, but this is under constant review.

Our 'bubble' groups are listed below and have changed slightly to minimise cross bubble exposure to staff and pupils. The drop-off and collection schedule for each year group is highlighted on the next page.

Bubble 1: Years Reception & 1

Bubble 2: Years 2 & 3

Bubble 3: Years 4, 5 & 6

DROP-OFF

Year Groups	Drop-off Time	Further Details
Years R to 6	8.00-8.25am* * Breakfast club from 7.30am	Please enter our driveway to the drop-off zone at Piccadilly, where your daughter will be met by our caring staff before they make their way to the playground.

If you are walking, scooting or cycling, please use the pathway so that your daughter can come through the Piccadilly entrance.

Please remember to maintain a safe distance.

COLLECTION

Year Groups	Collection Time	Further Details
Reception	3.10pm	<i>Please park on Woodcote Lane and come and wait in the parking area directly in front of the school. We will bring your daughters to the front path and send them across to you safely. Please remember to wear a mask and to maintain a safe distance.</i>
Year 1	3.15pm	<i>[As above]</i>
Year 2	3.20pm	<i>[As above]</i>
Years 3 and 4	3.55pm	<i>[As above]</i>
Years 5 and 6	4.05	<i>[As above]</i>

POINTS TO NOTE

Household health:

- Please continue to monitor the health of both yourself and your children and encourage the habit of regular handwashing.
- Do not send children into school if they, or any other member of the household, show any symptoms associated with Covid-19.
- Any child or member of staff who develops symptoms during the school day will be sent home immediately.
- If you have returned from a holiday in a country upon which the government has recently imposed quarantine measures, please contact the Head's PA, Sam Quartly, as soon as possible and prior your daughter's attendance in school.

Further guidance:

- Where it is prudent to do so, Cumnor House Girls' School will operate a one-way system around the school site, which will include different entrance and exit points from our buildings.
- Please support the school by wearing a mask and respecting social distancing when gathering with fellow parents and communicating with our staff. Please ensure that you make a prompt exit from the grounds when you have collected your daughter.
- Pupils should arrive in school each morning wearing their full uniform. On Games and PE days, however, they should arrive in their PE kit. Please support the school by ensuring that uniform is washed and changed regularly, daily if possible.

A few reminders



OUR CLEANING REGIME

We have a robust cleaning regime throughout the school day with a focus on bathrooms and high-touch areas. Our cleaning hours have been extended. At the end of the day, we repeat this regime and pay particular attention to the common areas of the school. On a Friday evening we do a weekly enhanced clean of all rooms in the school.

In the instance of a confirmed COVID-19 case, we would do a deep clean which includes all surface areas and carpets. In all cases we use coronavirus-approved disinfectants/aerosols. Foggers (will be deployed across the school to support the enhanced cleaning.

PERSONAL HYGIENE

Hand sanitiser will be available upon entering the school and in every classroom. Children will be required to wash hands or use sanitiser every time they change rooms.

FACE COVERINGS

Government advice does not currently recommend the use of face coverings in primary schools. We understand that some parents might still wish their son/daughter to wear one whilst in school and we will not be preventing them from doing so, so long as they are wearing it consistently and sensibly. We will ask individual pupils to remove their face covering if these are causing any disruption or issues in school. Some staff may choose to wear a mask

GAMES & SWIMMING

For swimming, we are following guidance issued by Swim England for pool operators.

CATERING

Our catering offer returns to relative normality this term. The kitchen will be open and serving meals and the children will remain in the secure 'bubbles' throughout mealtimes.

EQUIPMENT

For equipment-based lessons we are following the guidance issued by the accredited bodies for schools, such as Cleapss for Science, DT and Art, and AFPE for Sport. All equipment is cleaned after use. Pupils can take books home, but we continue to advise that high-touch items such as pens are brought from home in a pencil case. At this time, we would discourage younger children from bringing toys or 'comforters' to school. Should this create an issue, please contact the Head of Early Years, Mrs Mearkle.

TRANSPORT

Our transport service vehicles have been installed with Perspex screens to shield contact between the driver and children on the Home to School (and return) journey. Similar precautions will be in place should school transport be used for any extra-curricular activities, such as sporting events. **All children must wear a mask if using the minibus for whatever reason.**

AFTER SCHOOL CLUBS

These continue to be a crucial part of the school experience and we are endeavouring to return these activities safely back into the school day. Many of these activities can and will be delivered within our secure 'bubbles' and we will ensure that our pupils form consistent groups in accordance with government guidance, which we will continue to follow as it evolves. Some 3rd party providers may wish not to return to school yet.

A few reminders



OUR CLEANING REGIME

We have a robust cleaning regime throughout the school day with a focus on bathrooms and high-touch areas. Our cleaning hours have been extended. At the end of the day, we repeat this regime and pay particular attention to the common areas of the school. On a Friday evening we do a weekly enhanced clean of all rooms in the school.

In the instance of a confirmed COVID-19 case, we would do a deep clean which includes all surface areas and carpets. In all cases we use coronavirus-approved disinfectants/aerosols. Foggers (will be deployed across the school to support the enhanced cleaning.

PERSONAL HYGIENE

Hand sanitiser will be available upon entering the school and in every classroom. Children will be required to wash hands or use sanitiser every time they change rooms.

FACE COVERINGS

Government advice does not currently recommend the use of face coverings in primary schools. We understand that some parents might still wish their son/daughter to wear one whilst in school and we will not be preventing them from doing so, so long as they are wearing it consistently and sensibly. We will ask individual pupils to remove their face covering if these are causing any disruption or issues in school. Some staff may choose to wear a mask

GAMES & SWIMMING

For swimming, we are following guidance issued by Swim England for pool operators.

CATERING

Our catering offer returns to relative normality this term. The kitchen will be open and serving meals and the children will remain in the secure 'bubbles' throughout mealtimes.

EQUIPMENT

For equipment-based lessons we are following the guidance issued by the accredited bodies for schools, such as Cleapss for Science, DT and Art, and AFPE for Sport. All equipment is cleaned after use. Pupils can take books home, but we continue to advise that high-touch items such as pens are brought from home in a pencil case. At this time, we would discourage younger children from bringing toys or 'comforters' to school. Should this create an issue, please contact the Head of Early Years, Mrs Mearkle.

TRANSPORT

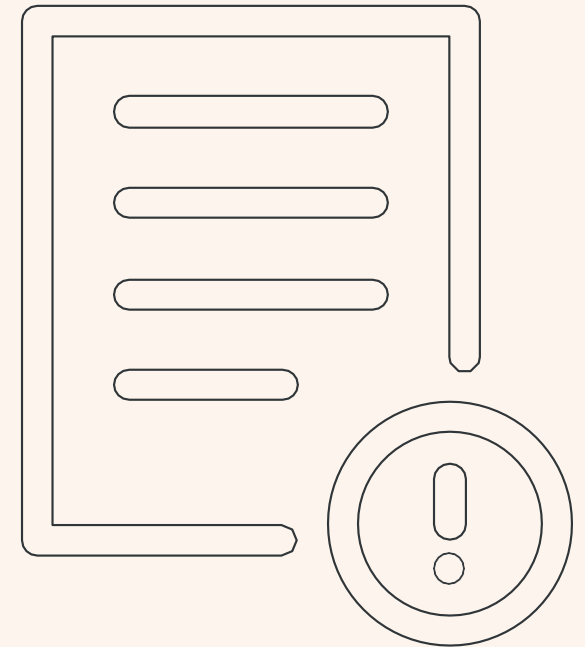
Our transport service vehicles have been installed with Perspex screens to shield contact between the driver and children on the Home to School (and return) journey. Similar precautions will be in place should school transport be used for any extra-curricular activities, such as sporting events. **All children must wear a mask if using the minibus for whatever reason.**

AFTER SCHOOL CLUBS

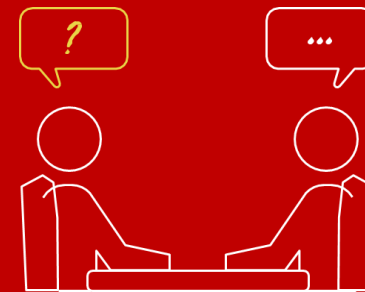
These continue to be a crucial part of the school experience and we are endeavouring to return these activities safely back into the school day. Many of these activities can and will be delivered within our secure 'bubbles' and we will ensure that our pupils form consistent groups in accordance with government guidance, which we will continue to follow as it evolves. If a club operates across bubbles, social distancing will be adhered to. Some 3rd party providers may wish not to return to school yet.

SUMMARY OF KEY CHANGES

1. Talk to your daughter about the expectations outlined in this guide
2. Do not send your daughter into school if they, or any other member of the household, show any symptoms associated with Covid-19
3. Please talk to your daughter about sensible behaviours to reduce viral infection and ensure regular hand washing and the importance of, “Hands. Face. Space.”
4. Take note of any changes to the timings of the school day for your daughter
5. Ensure that you are prompt for drop-off and collection and adhere to social distancing measures



FAQS



Q: Will the 10-day isolation of bubbles return?

Yes, in instances of a confirmed case in a bubble this will continue to be applied for close contacts. We never like to send bubbles home, but it is a government requirement that we have to follow. In these instances, we will immediately revert to our online teaching provision allowing all children to progress in their education without interruption.

Q: What is happening with school catering?

We will be resuming our catering provision. The team have worked hard on COVID-secure practices in the kitchens and serving area. Children will have access to a range of dinners, as per the menus which will be published soon. Pupils will eat their meals in distanced placings in the Dining Room, seated with their own bubble group.

Q: Are sports, clubs and trips returning?

Yes, where possible. We are keen to return to 'business as usual' as much as possible, and this component of education is important. Certain non-contact sports are approved, and clubs can generally re-start, although there are some restrictions in the latest guidance. No educational trips are permitted yet. We keep a sharp eye on government advice on these topics as guidance changes frequently.

Q: What will happen with equipment?

We ask that children bring in their own equipment and stationery as normal. In some lessons (eg Art, Computing, PE), equipment will be provided as a part of the lesson requirements. Under these circumstances, it will have been cleaned between use by other pupils.

Q: What is the school's approach to hand hygiene?

There are a number of non-touch hand sanitisers around the school. Pupils already know to use these on arrival at school and at designated breaks in the day. There will also be provision for hand washing in some classes and hand gel in others to maintain the highest standards of hygiene in these areas.

Q: How will social distancing work?

We recognise that the child's age can impact on the extent to which social distancing can be achieved and is necessary, so children will be encouraged and reminded to maintain sensible distances where possible.

Q: Will teachers be tested?

All teachers will have lateral flow tests so that, as far as possible, we can do our bit to contain the virus. If a teacher tests positive, then appropriate action will be taken. Primary aged children are not required to be tested but we ask that parents let us know immediately if they suspect that their daughter has Covid.



The return to school – We're ready!

Cumnor Girls' Guidance: March 2021

Cumnor House
School

